



**RENEWAL nr 20/1  
OF THE FRENCH "PROCES-VERBAL" nr EFR-15-002724 B**

According to the decree March 22nd 2004 amended by decree of March 14th 2011

**Subject** Suspended ceiling with visible framework and mineral fibre tiles:

- Framework: SAINT GOBAIN EUROCOUSTIC QUICK-LOCK CLIP-ON and QUICK-LOCK HOOK-ON
- Panel: SAINT GOBAIN EUROCOUSTIC TONGA A, ALTES, ACOUSTICHOC, TONGA® ULTRA CLEAN A, ATHENA

Applicable beneath floors comprising:

- Joist: concrete, pre-stressed concrete, steel, cold formed steel, wood
- Slab: cellular concrete, pre-stressed concrete, concrete, steel-concrete composite, wood

**Sponsor** SAINT GOBAIN EUROCOUSTIC  
Tour Saint-Gobain  
12 place de l'Iris  
F - 924 COURBEVOIE

**Renewed technical assessments** Technical assessments can relate to the reference French "procès-verbal". They can be combined together upon Efectis France's approval.  
Are renewed the technical assessments issued according to the reference French "procès-verbal", and whose references are:  
**NONE**

**Validity** The reference "procès-verbal" and the above-mentioned technical assessments and their possible revisions as well as those which could have issued after the date of publication of this document, will be valid until:  
**02 September 2025.**  
After this date, the reference "procès-verbal" is no more valid, except if another renewal delivered by Efectis France is enclosed to it.  
This renewal is only valid if the reference "procès-verbal" is enclosed.

*These conclusions only relate to the fire resistance performances of the elements covered by this document. They are without prejudice, in any case, to other performances related to their use in a structure.*

Maizières-lès-Metz, 16 June 2020

X

*Renaud FAGNONI*

X

*Clifford CHINAYA*

Project leader  
Signé par : Renaud FAGNONI

Supervisor  
Signé par : Clifford CHINAYA

*The duplication of this document is authorized on the condition that a full copy of the document is made.*



## CHARACTERISATION "PROCES-VERBAL" No. EFR-15-002724 B

Fire resistance of construction elements, as per amended Ministerial Order dated March 22, 2004 issued by the French Ministry of the Interior

<b>Period of validity</b>	This "procès-verbal" and any extensions are valid until 02 September 2020
<b>Assessment of the reference laboratory</b>	EFR-15-002724
<b>Concerning</b>	<p>Suspended ceiling with visible framework and mineral fibre tiles:</p> <ul style="list-style-type: none"><li>• Framework: SAINT GOBAIN EUROCOUSTIC QUICK-LOCK CLIP-ON and QUICK-LOCK HOOK-ON</li><li>• Panel: SAINT GOBAIN EUROCOUSTIC TONGA A, ALTES, ACOUSTICHOC, TONGA® ULTRA CLEAN A, ATHENA</li></ul> <p>Applicable beneath floors comprising:</p> <ul style="list-style-type: none"><li>• Joist: concrete, pre-stressed concrete, steel, cold formed steel, wood</li><li>• Slab: cellular concrete, pre-stressed concrete, concrete, steel-concrete composite, wood</li></ul>
<b>Applicant</b>	SAINT GOBAIN EUROCOUSTIC 1 place Victor Hugo F - 92411 COURBEVOIE Cedex

## 1 PURPOSE OF THE PROCES-VERBAL

---

Determination, in compliance with the procedure indicated in standard EN 13381-1 "Test methods for determining the contribution to the fire resistance of structural members: Part 1: Horizontal protective membranes" and the decree, modified on 22 March 2004, of temperatures attained in the plenum and steel joists of a standard floor with steel joists and covering of cellular concrete slabs and protected on the underside by a suspended ceiling.

## 2 TEST LABORATORY

---

EFFECTIS France  
Voie Romaine  
F - 57280 MAIZIERES-LES-METZ

## 3 TEST APPLICANT

---

SAINT GOBAIN EUROCOUSTIC  
Les Renardières - Bâtiment A Ilot Alsace  
1 place Victor Hugo  
F - 92411 COURBEVOIE Cedex

## 4 REFERENCE DOCUMENT

---

Document number	Document date
Laboratory assessment EFR-15-002724	02 September 2015

## 5 REFERENCE AND SOURCE OF ELEMENT TESTED

---

### 5.1 FRAMEWORKS

Reference : QUICK-LOCK CLIP-ON and QUICK-LOCK HOOK-ON

Source : SAINT GOBAIN EUROCOUSTIC or SAINT GOBAIN PLAFOMETAL  
1 place Victor Hugo Route de Phades  
F - 92411 COURBEVOIE Cedex F - 08800 MONTHERME

### 5.2 PANELS

Reference : TONGA A Blanc, ALTES, ACOUSTICHOUC Couleur, TONGA® ULTRA CLEAN A, ATHENA (th = 22 mm)

Source : SAINT GOBAIN EUROCOUSTIC  
1 place Victor Hugo  
F - 92411 COURBEVOIE Cedex

## 6 DESCRIPTION OF THE ELEMENTS

### 6.1 GENERAL

The element is a suspended ceiling with visible framework and mineral slabs protecting a floor such as described in section 15 of standard EN 13381-1 and in sections 8 and 9 of the present document.

### 6.2 SCHEDULE OF COMPONENTS

Prepared from information provided by the applicant.

Description	Reference	Material	Characteristics	Supplier
Load-bearing T-profile	QUICK-LOCK CLIP-ON	galvanized steel white pre-painted steel	24 x 38 mm l: 3600 mm th: 0.35 / 0.17 mm	SAINT GOBAIN EUROCOUSTIC
	QUICK-LOCK HOOK-ON		24 x 38 mm l: 3600 mm th: 0.35 / 0.17 mm	
"T" crosspiece 1200	QUICK-LOCK CLIP-ON	galvanized steel white pre-painted steel	24 x 32 mm l: 1200 mm th: 0.35 / 0.17 mm	SAINT GOBAIN EUROCOUSTIC
	QUICK-LOCK HOOK-ON		24 x 32 mm l: 1200 mm th: 0.35 / 0.17 mm	
"T" crosspiece 600	QUICK-LOCK CLIP-ON	galvanized steel white pre-painted steel	24 x 25 mm l: 600 mm th: 0.35 / 0.17 mm	SAINT GOBAIN EUROCOUSTIC
	QUICK-LOCK HOOK-ON		24 x 32 mm l: 600 mm th: 0.35 / 0.17 mm	
Channel trim	87926 87933	white pre-painted steel	19 x 40 x 19 mm l: 3000 mm th: 5/10 mm	SAINT GOBAIN EUROCOUSTIC
Adjustable hanger	87559 / 87561 / 87563 / 87566	steel	Ø: 4 mm	SAINT GOBAIN EUROCOUSTIC
Self-tapping screws	VPC5	steel	Ø: 3.8 mm l: 55 mm	SAINT GOBAIN EUROCOUSTIC
Edge spring	AC 49	"spring" steel	th: 5/10 mm	SAINT GOBAIN EUROCOUSTIC
Horizontal support clip	AC 84	steel	w: 40 mm th: 1.1 mm	SAINT GOBAIN EUROCOUSTIC
Anti-lifting clip	Pin 87807 / AC 38	steel	Ø: 2.4 mm	SAINT GOBAIN EUROCOUSTIC
	EUROCLIP	steel		SAINT GOBAIN EUROCOUSTIC
	Staple 87798 / AC 254	steel		SAINT GOBAIN EUROCOUSTIC
	Clip 87805 / CA 115	steel		SAINT GOBAIN EUROCOUSTIC
Panel	TONGA A, ALTES, ACOUSTICHOC, TONGA® ULTRA CLEAN A, ATHENA	Rock wool surfaced with a decorative white or coloured coat.	595 x 595 x 22 mm ad = 2.3 kg/m <sup>2</sup>	SAINT GOBAIN EUROCOUSTIC
Insulation	EUROLENE 603	Rock wool	1200 x 600 x 160 mm bd = 34 kg/m <sup>3</sup>	SAINT GOBAIN EUROCOUSTIC
Supplementary insulation	IBR	Glass wool	th = 0 to 200 mm bd = 11 kg/m <sup>3</sup>	ISOVER
Last panel fixing system	87795 / CA 120			PLAFOMETAL

*l = length --- h = height --- th = Thickness --- bd = bulk density --- ad = area density*

### 6.3 DESCRIPTION OF THE CEILING

#### 6.3.1 Channel trim

The channel trim is attached to the inside face of the peripheral walls by self-tapping screws 3.8 x 55 mm (Ø x l) at maximum intervals of 300 mm.

#### 6.3.2 Load-bearing framework

##### 6.3.2.1 Load-bearing profiles

The load-bearing profiles QUICK-LOCK CLIP-ON or HOOK-ON are arranged longitudinally along the ceiling.

They are installed so as to create a plenum of at least 300 mm between the underside of the load-bearing floor and upper side of the ceiling, which may be defined as the upper face of the panels or the upper face of the insulation.

These profiles, which may comprise two elements snapped together, comprise a Fire Break for each length. The joint between two profiles is at 195 mm from the butt joint at a maximum of 1885 mm from the walls.

The profiles are in galvanized steel (core thickness = 35/100mm), pre-painted white (underside - thickness = 17/100 mm).

Load-bearing profiles are installed without any gap, i.e. butted up against the walls.

The profiles are installed so as to respect the following distances:

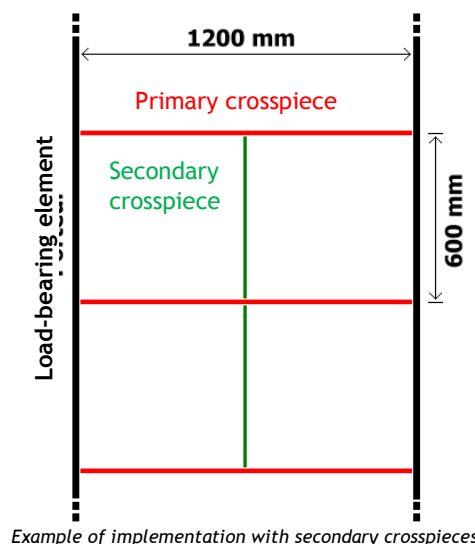
- Spacing from centre line:
  - Without secondary crosspiece: 600 mm
  - With primary crosspieces: 1200 mm
- Maximum distance between load-bearing elements and walls: 375 mm.

##### 6.3.2.2 Crosspieces

Crosspieces are in galvanized steel (core thickness = 35/100mm), pre-painted white (underside - thickness = 17/100 mm).

Two types of crosspiece can be employed:

- Primary crosspieces, used between the load-bearing elements at 600 mm spacings;
- Secondary crosspieces, used between the primary crosspieces previously described and resting in the channel trim.



They are equipped at each end with a fixing system and are assembled into the notches formed in the load-bearing profiles and crosspieces or rest on the channel trim.

### 6.3.3 Hangers

Each load-bearing profile is supported by the fixing hangers. The hangers are used in order to create a plenum as defined in section 6.3.2.1.

The hangers are at intervals of:

- 900 mm with insulation on the back of the panels:
- 1200 mm without insulation on the back of the panels:

Each of these comprises:

- an adjustable hanger, two steel wire hooks Ø 4 mm;
- a horizontal support clip for IPE 160.

### 6.3.4 Ceiling panels

The ceiling panels are in rock wool surfaced with a decorative white or coloured coating.

Reference	Dimensions	Thickness	Area density (kg/m <sup>2</sup> ):	Edges
TONGA A ALTES ACOUSTICOC TONGA® ULTRA CLEAN A ATHENA	595 x 595	22 mm	2.3 kg/m <sup>2</sup>	Straight

The panels are fitted inside the metal framework formed by the load-bearing elements and cross-beams.

The anti-lifting clips are fitted onto each panel as it is installed.

The last complete panel is fitted with a locking system. This comprises two sheet metal profiles enclosing the sides of the panel, connected by two flats with steel screws. The end panel is locked by sliders running on the load-bearing framework that locks together the two profiles.

### 6.3.5 Thermal insulation

#### 6.3.5.1 Insulation

Rock wool panels, reference EUROLENE 603, of dimensions 1200 x 600 x 160 mm (l x w x th) and bulk density 34 kg/m<sup>3</sup> (5.44 kg/m<sup>2</sup>), can be installed on the back of the panels. They are installed one against the other with no gaps.

Supplementary glass fibre insulation IBR (ISOVER), of maximum thickness 200 mm and bulk density 11 kg/m<sup>3</sup> (2.2 kg/m<sup>2</sup> maximum) can be implemented over the rock wool insulation. The glass fibre can be bare or covered with an aluminium vapour barrier.

## 6.4 NON-REMOVABILITY

Non-removability tests were performed in accordance with the Application Protocol of the old Ministry of the Interior decree of 3 August 1999 on the ceiling panels in the central part and on the last ceiling panel as indicated in the reference document.

Following these conclusive tests, the ceiling was considered non-removable.

## 7 REPRESENTATIVE NATURE OF ELEMENTS

The sample tested is considered representative of the applicant's current standard manufacture.

The conditions to be respected for installation are described in this "procès-verbal", and comply with those observed during installation for the test.

## 8 CONCLUSIONS

These classifications were produced in accordance with section 7.4.6.2. of NF EN 13501-2, and the report of CECMI dated 6 December 2005.

The element was classified using the following combinations of parameters and ratings.

No other classification is permitted.

### 8.1 WITH EUROLENE ROCK WOOL

Construction material of beams and girders	Construction material of floor support	Reference temperatures (°C)		Fixed periods to attain reference temperatures (min)		Classifications	
		In the plenum	In the load-bearing structures	In the plenum	In the load-bearing structures	R	REI
Pre-stressed concrete	Cellular concrete	450	-	140	-	120*	120*
	Pre-stressed concrete	450	-	140	-	120*	120*
	Concrete	450	-	140	-	120*	120*
	Mixed steel/concrete	400	350	120	100	90*	90*
Concrete	Cellular concrete	600	-	150	-	120*	120*
	Pre-stressed concrete	450	-	140	-	120*	120*
	Concrete	600	-	150	-	120*	120*
	Mixed steel/concrete	400	350	120	100	90*	90*
	Wood	300	-	80	-	60*	60*
Steel	Cellular concrete	530	510	150	150	120*	120*
	Pre-stressed concrete	450	-	140	-	120*	120*
	Concrete	530	510	150	150	120*	120*
	Mixed steel/concrete	400	350	120	100	90*	90*
	Wood	300	-	80	-	60*	60*
Cold formed steel	Cellular concrete	370	350	110	100	90*	90*
	Pre-stressed concrete	370	350	110	100	90*	90*
	Concrete	370	350	110	100	90*	90*
	Mixed steel/concrete	370	350	110	100	90*	90*
	Wood	300	-	80	-	60*	60*
Wood	Cellular concrete	300	-	80	-	60*	60*
	Pre-stressed concrete	300	-	80	-	60*	60*
	Concrete	300	-	80	-	60*	60*
	Mixed steel/concrete	300	-	80	-	60*	60*
	Wood	300	-	80	-	60*	60*

\*: these classifications are authorised subject to the ceiling presenting good semi-natural fire resistance and that the value  $\sqrt{\lambda \cdot \rho \cdot c}$  of the ceiling is less than or equal to 550 S.I. units. (at 20°C, with  $\lambda$ : thermal conductivity,  $\rho$ : density and  $c$ : specific heat). In the absence of justification, the classification is limited to 30 minutes.

## 8.2 WITHOUT EUROLENE ROCK WOOL

Construction material of beams and girders	Construction material of floor support	Reference temperatures (°C)		Fixed periods to attain reference temperatures (min)		Classifications	
		In the plenum	In the load-bearing structures	In the plenum	In the load-bearing structures	R	REI
Pre-stressed concrete	Cellular concrete	450	-	40	-	30	30
	Pre-stressed concrete	450	-	40	-	30	30
	Concrete	450	-	40	-	30	30
	Mixed steel/concrete	400	350	40	40	30	30
Concrete	Cellular concrete	600	-	50	-	45*	45*
	Pre-stressed concrete	450	-	40	-	30	30
	Concrete	600	-	50	-	45*	45*
	Mixed steel/concrete	400	350	40	40	30	30
	Wood	300	-	20	-	20	20
Steel	Cellular concrete	530	510	40	50	45*	45*
	Pre-stressed concrete	450	-	40	-	30	30
	Concrete	530	510	40	50	45*	45*
	Mixed steel/concrete	400	350	40	40	30	30
	Wood	300	-	20	-	20	20
Cold formed steel	Cellular concrete	370	350	30	40	30	30
	Pre-stressed concrete	370	350	30	40	30	30
	Concrete	370	350	30	40	30	30
	Mixed steel/concrete	370	350	30	40	30	30
	Wood	300	-	20	-	20	20
Wood	Cellular concrete	300	-	20	-	20	20
	Pre-stressed concrete	300	-	20	-	20	20
	Concrete	300	-	20	-	20	20
	Mixed steel/concrete	300	-	20	-	20	20
	Wood	300	-	20	-	20	20

\*: these classifications are authorised subject to the ceiling presenting good semi-natural fire resistance and that the value  $\sqrt{\lambda \cdot \rho \cdot c}$  of the ceiling is less than or equal to 550 S.I. units. (at 20°C, with  $\lambda$ : thermal conductivity,  $\rho$ : density and  $c$ : specific heat). In the absence of justification, the classification is limited to 30 minutes.



## 9 FIRE RESISTANCE CLASSIFICATION VALIDITY CONDITIONS

---

### 9.1 DURING MANUFACTURE AND IN IMPLEMENTATION

The element and its assembly must conform to the detailed description appearing in the reference laboratory assessment, excluding:

- any contact between the upper faces of the installed slabs with structural or flammable elements;
- the presence of accessories lying on or suspended beneath the suspended ceiling;
- a mean height of the plenum less than 300 mm.

In the event of dispute regarding an element forming the subject of this "procès-verbal", the laboratory assessment may be requested from its owner, with no obligation to transfer the document.

### 9.2 DIRECTION OF FIRE

Fire **BENEATH** the suspended ceiling.

## 10 SCOPE OF VALIDITY OF "PROCÈS-VERBAL"

---

### 10.1 TYPES OF SUPPORT STRUCTURES PERMITTED

When the operating procedure described in the test method EN 13381-1 is performed on a standardised construction conforming to section 6.4.2 of standard EN 13381-1, the results obtained can be applied to horizontal structural elements conforming to combinations indicated in § 8 of the present "procès-verbal" and to the following prescriptions:

- Type of joist/beam:
  - Concrete
  - Pre-stressed concrete
  - Steel
  - Cold formed steel
  - Wood
- Type of floor:
  - Cellular concrete
  - Pre-stressed concrete
  - Concrete
  - Steel-concrete composite
  - Wood.

### 10.2 TYPES OF CONCRETE

In accordance with § 15.2 of the standard EN 13381-1, the performances indicated in § 8 of this "procès-verbal" are applicable to horizontal structural elements employing slab floors of:

- Cellular concrete of thickness greater than or equal to 125 mm and bulk density greater than or equal to 650 kg/m<sup>3</sup>;
- Normal concrete of thickness greater than or equal to 60 mm and bulk density greater than 2350 ± 150 kg/m<sup>3</sup>.

The authorised application concerning the plenum, according to section 10.6 of this "procès-verbal", must be possible in both cases.

### 10.3 TYPES OF STEEL BEAMS/JOISTS

In accordance with § 15.3 of the standard EN 13381-1, the performances indicated in § 8 of this "procès-verbal" are applicable to horizontal structural elements employing steel beams or joists

- irrespective of their section factor when the fire resistance is limited by the temperature measurement of the plenum;
- having a section factor less than  $275 \pm 25 \text{ m}^{-1}$  when the fire resistance is limited by the temperature measurement of the surface of the lower flange of the steel beam employed during the test.

It must be possible in both cases to achieve the requirements of the authorised application with respect to the plenum, as per section 10.6 of this "procès-verbal".

### 10.4 TYPES OF MIXED FLOORS, CONCRETE WITH STEEL TROUGH DECKING

In accordance with § 15.4 of the standard EN 13381-1, the performances indicated in § 8 of the present "procès-verbal" are applicable to horizontal structural elements employing:

- steel beams and joists having a section factor less than  $268.7 \text{ m}^{-1}$ ;
- concrete floors incorporating steel trough decking having:
  - a thickness of concrete above the tops of the steel trough decking greater than 60 mm;
  - concrete having bulk density of at least  $2350 \text{ kg/m}^3$ ;
  - concrete with a minimum resistance class of C25/30;
  - steel trough decking with thickness of at least 75/100 mm.

It must be possible to achieve the requirements of the authorised application with respect to the plenum, as per section 10.6 of this "procès-verbal".

### 10.5 TYPES OF WOODEN STRUCTURES

In accordance with § 15.5 of the standard EN 13381-1, the performances indicated in § 8 of the present "procès-verbal" are applicable to horizontal structural elements in wood, having:

- Thicknesses of particleboard /wood covering, greater than or equal to 21 mm;
- Particleboards installed perpendicularly to the joists assembled together by tongue and groove.
- Butted assemblies of panels located only above the joists.

The requirements of EN 1995-1-1 must also be satisfied.

It must be possible to achieve the requirements of the authorised application with respect to the plenum, as per section 10.6 of this "procès-verbal".

### 10.6 HEIGHT OF PLENUM

In accordance with § 15.6 of the standard EN 13381-1, the performances indicated in § 8 of this "procès-verbal" are applicable to horizontal structural elements protected by the same suspended ceiling as that described in this document but with a higher plenum height, i.e. a minimum of 300 mm.

### 10.7 PROPERTIES OF THE HORIZONTAL PROTECTIVE MEMBRANE

In accordance with § 15.8 of the standard EN 13381-1, the performances stated in § 8 of this "procès-verbal" and obtained using the suspended ceiling described in this document, are only valid for any other ceiling of the type having the same properties (same bulk density and same thickness  $\pm 5\%$ ) and same framework components.

#### 10.8 DIMENSIONS OF SUSPENDED CEILING TILES

In accordance with § 15.9 of the standard EN 13381-1, the performances indicated in § 8 of this "procès-verbal" are only valid for ceiling panels having identical dimensions to those described in this document.

#### 10.9 ACCESSORIES AND FITTINGS

In accordance with §15.10 of the standard EN 13381-1, the performance indicated in § 8 of this "procès-verbal" and obtained on the ceiling tested without accessories or equipment are not applicable to suspended ceilings implemented with accessories and equipment which could influence their fire resistance performances.

An additional test including these accessories and fittings must be conducted.

#### 10.10 FREE SPACE BETWEEN CEILING FRAMEWORK AND SURROUNDING WALLS

In accordance with §15.11 of the standard EN 13381-1, the performance indicated in § 8 of this "procès-verbal" and obtained on a suspended ceiling installed with no gaps between its framework and the surrounding walls of the test assembly, are transposable to in situ installations where such gaps are implemented, provided these do not exceed 5 mm.

### 11 VALIDITY PERIOD FOR FIRE RESISTANCE CLASSIFICATIONS

---

This "procès-verbal" is valid for FIVE years as of the date of delivery, i.e. until:

THE SECOND OF SEPTEMBER, TWO THOUSAND AND TWENTY

After this date, this "procès-verbal" is no longer valid unless it is accompanied by a re-issue supplied by EFECTIS France.

Maizières-lès-Metz, 02 September 2015



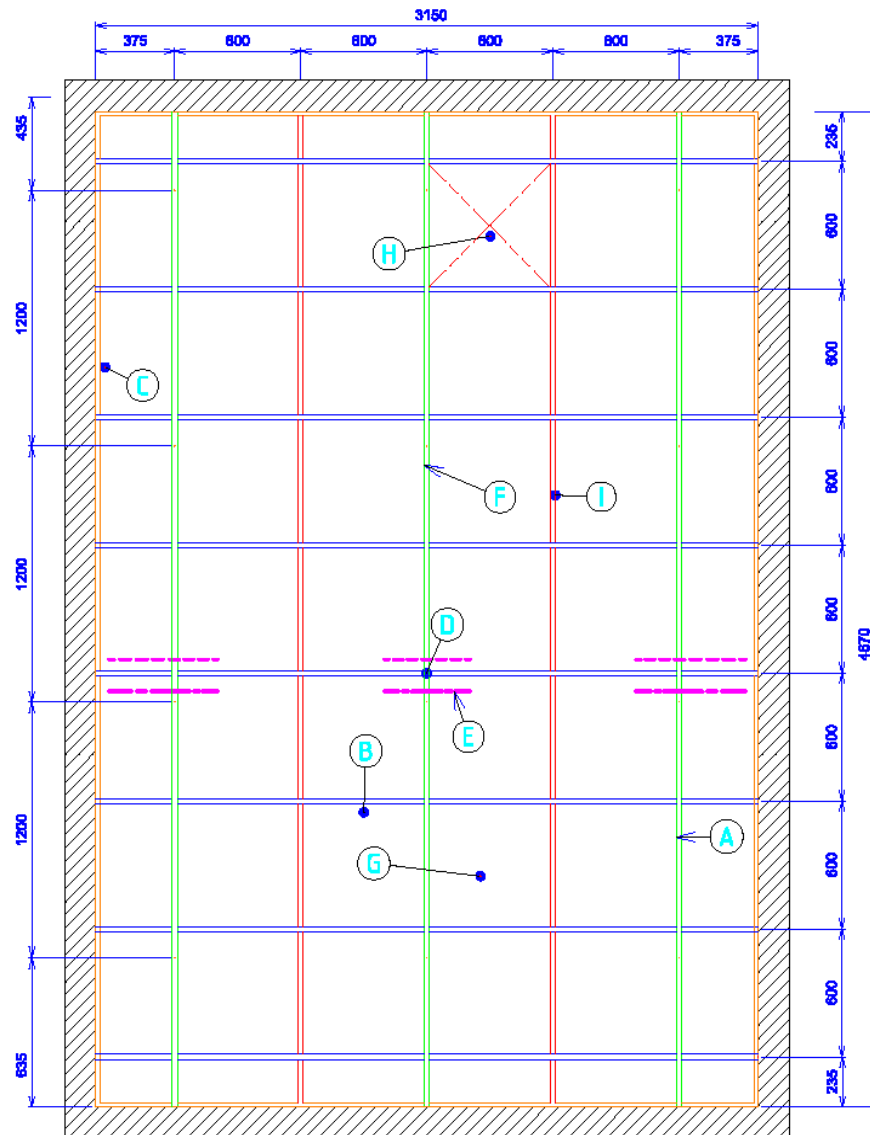
Alain DORKEL  
Engineer Project Leader




Renaud SCHILLINGER  
Head of Testing Department

*The indicated classification makes no assumptions regarding the compliance of commercial construction elements with the samples submitted for testing, and in no way may be considered as a qualification certification as defined by the law of 03 June 1994.*

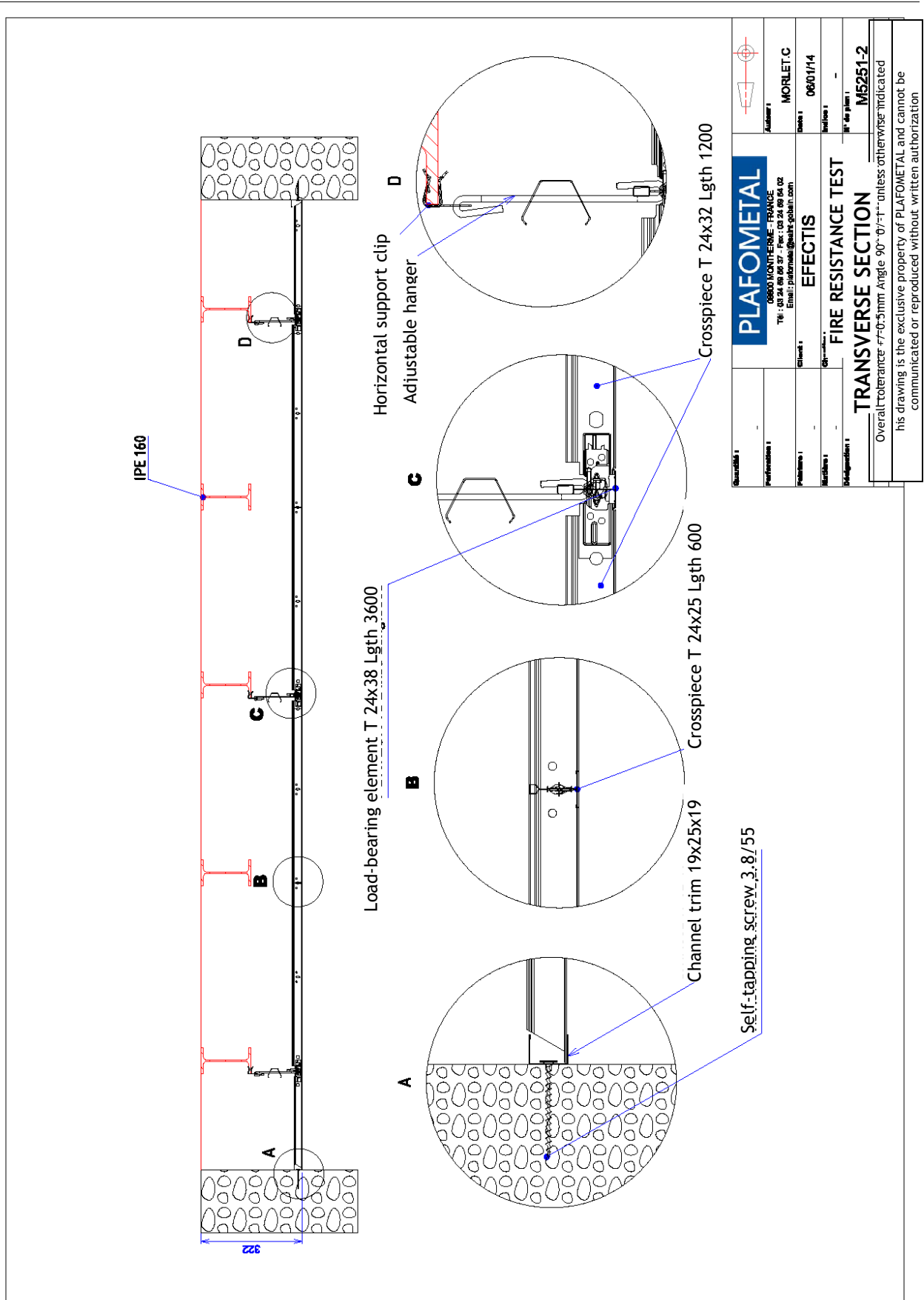
ILLUSTRATIONS APPENDIX

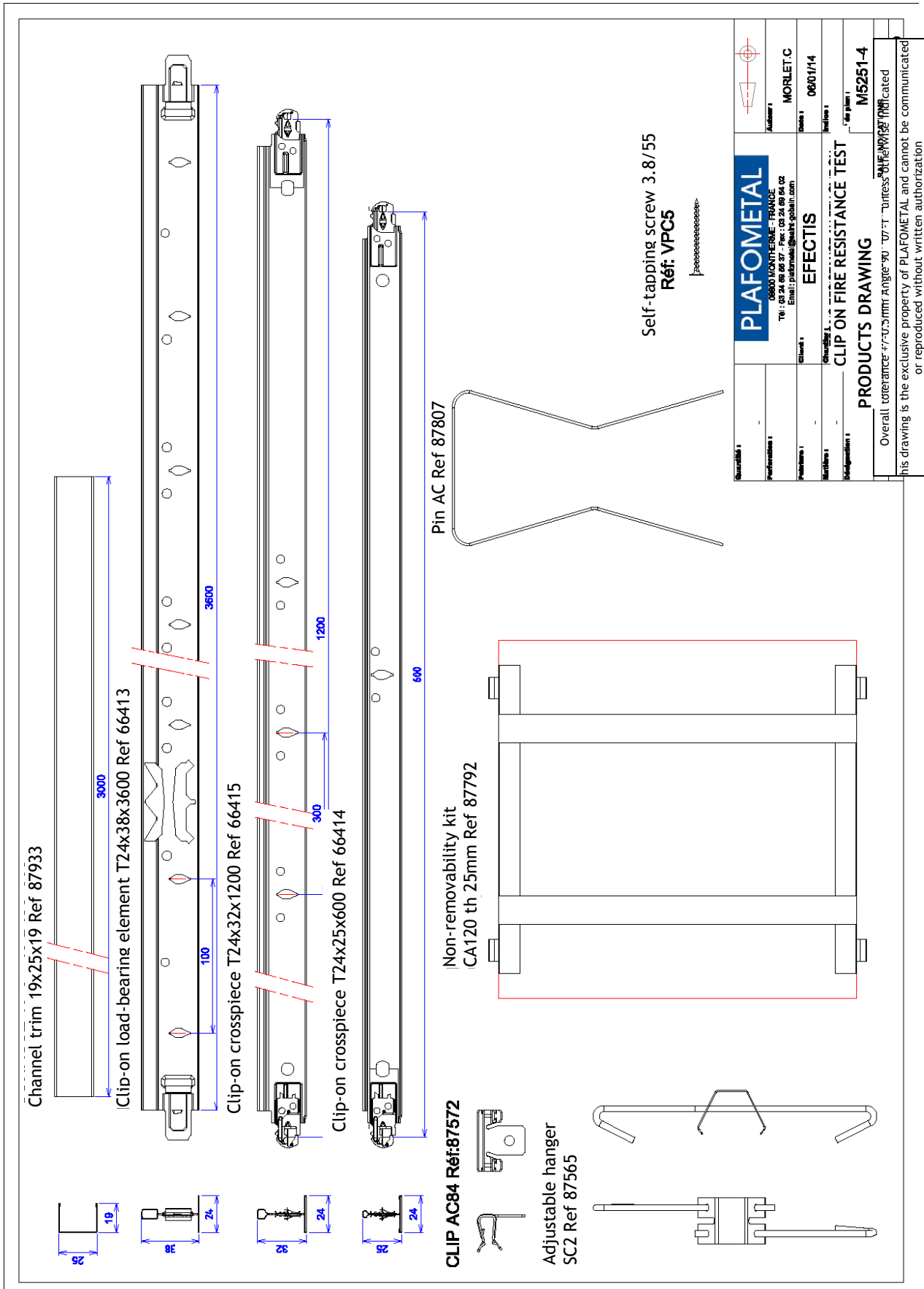


- A: Load-bearing profile
- B: Crosspiece length 1200
- C: Channel trim
- D: Fire-break
- E: Load-bearing butt-joint
- F: Suspension point on IPE
- G: Panel
- H: Last panel
- I: Crosspiece length 600

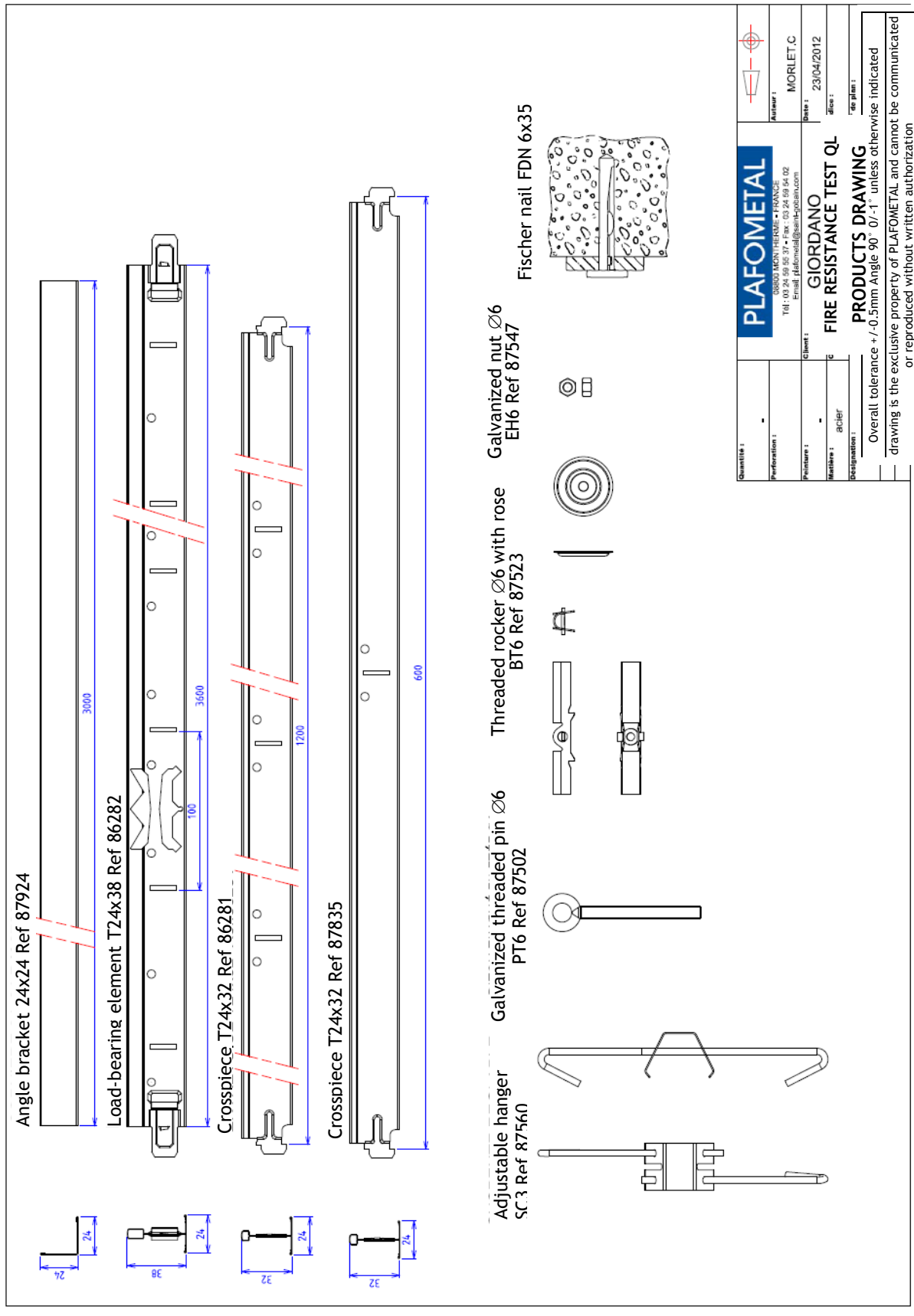
Quantité :	-	<b>PLAFOMETAL</b> 06200 MONTHERME - FRANCE Tél : 03 24 59 55 37 - Fax : 03 24 59 54 02 Email : plafometal@saint-gobain.com	
Perforation :	-		
Polarité :	-	Client : <b>EFFECTIS</b>	Date : <b>06/01/14</b>
Matériau :	-	Charakter : <b>FIRE RESISTANCE TEST</b>	Indice : <b>A</b>
Modifications :	-	<b>LAYOUT</b>	N° de plan : <b>M5251-1</b>
Overall tolerance +/-0.5mm Angle 90° 0/-1° unless otherwise indicated			
This drawing is the exclusive property of PLAFOMETAL and cannot be communicated or reproduced without written authorization			







Client 1	PLAFOMETAL
Adresse 1	09000 MONTHERME - FRANCE
Telephone 1	Tel : 03 24 69 89 37 - Fax : 03 24 69 64 02
Mail 1	Email: plafometal@alps-sphain.com
Client 2	EFFECTIS
Adresse 2	
Telephone 2	
Mail 2	
Client 3	
Adresse 3	
Telephone 3	
Mail 3	
Client 4	
Adresse 4	
Telephone 4	
Mail 4	
Client 5	
Adresse 5	
Telephone 5	
Mail 5	
Client 6	
Adresse 6	
Telephone 6	
Mail 6	
Client 7	
Adresse 7	
Telephone 7	
Mail 7	
Client 8	
Adresse 8	
Telephone 8	
Mail 8	
Client 9	
Adresse 9	
Telephone 9	
Mail 9	
Client 10	
Adresse 10	
Telephone 10	
Mail 10	
Client 11	
Adresse 11	
Telephone 11	
Mail 11	
Client 12	
Adresse 12	
Telephone 12	
Mail 12	
Client 13	
Adresse 13	
Telephone 13	
Mail 13	
Client 14	
Adresse 14	
Telephone 14	
Mail 14	
Client 15	
Adresse 15	
Telephone 15	
Mail 15	
Client 16	
Adresse 16	
Telephone 16	
Mail 16	
Client 17	
Adresse 17	
Telephone 17	
Mail 17	
Client 18	
Adresse 18	
Telephone 18	
Mail 18	
Client 19	
Adresse 19	
Telephone 19	
Mail 19	
Client 20	
Adresse 20	
Telephone 20	
Mail 20	
Client 21	
Adresse 21	
Telephone 21	
Mail 21	
Client 22	
Adresse 22	
Telephone 22	
Mail 22	
Client 23	
Adresse 23	
Telephone 23	
Mail 23	
Client 24	
Adresse 24	
Telephone 24	
Mail 24	
Client 25	
Adresse 25	
Telephone 25	
Mail 25	
Client 26	
Adresse 26	
Telephone 26	
Mail 26	
Client 27	
Adresse 27	
Telephone 27	
Mail 27	
Client 28	
Adresse 28	
Telephone 28	
Mail 28	
Client 29	
Adresse 29	
Telephone 29	
Mail 29	
Client 30	
Adresse 30	
Telephone 30	
Mail 30	
Client 31	
Adresse 31	
Telephone 31	
Mail 31	
Client 32	
Adresse 32	
Telephone 32	
Mail 32	
Client 33	
Adresse 33	
Telephone 33	
Mail 33	
Client 34	
Adresse 34	
Telephone 34	
Mail 34	
Client 35	
Adresse 35	
Telephone 35	
Mail 35	
Client 36	
Adresse 36	
Telephone 36	
Mail 36	
Client 37	
Adresse 37	
Telephone 37	
Mail 37	
Client 38	
Adresse 38	
Telephone 38	
Mail 38	
Client 39	
Adresse 39	
Telephone 39	
Mail 39	
Client 40	
Adresse 40	
Telephone 40	
Mail 40	
Client 41	
Adresse 41	
Telephone 41	
Mail 41	
Client 42	
Adresse 42	
Telephone 42	
Mail 42	
Client 43	
Adresse 43	
Telephone 43	
Mail 43	
Client 44	
Adresse 44	
Telephone 44	
Mail 44	
Client 45	
Adresse 45	
Telephone 45	
Mail 45	
Client 46	
Adresse 46	
Telephone 46	
Mail 46	
Client 47	
Adresse 47	
Telephone 47	
Mail 47	
Client 48	
Adresse 48	
Telephone 48	
Mail 48	
Client 49	
Adresse 49	
Telephone 49	
Mail 49	
Client 50	
Adresse 50	
Telephone 50	
Mail 50	
Client 51	
Adresse 51	
Telephone 51	
Mail 51	
Client 52	
Adresse 52	
Telephone 52	
Mail 52	
Client 53	
Adresse 53	
Telephone 53	
Mail 53	
Client 54	
Adresse 54	
Telephone 54	
Mail 54	
Client 55	
Adresse 55	
Telephone 55	
Mail 55	
Client 56	
Adresse 56	
Telephone 56	
Mail 56	
Client 57	
Adresse 57	
Telephone 57	
Mail 57	
Client 58	
Adresse 58	
Telephone 58	
Mail 58	
Client 59	
Adresse 59	
Telephone 59	
Mail 59	
Client 60	
Adresse 60	
Telephone 60	
Mail 60	
Client 61	
Adresse 61	
Telephone 61	
Mail 61	
Client 62	
Adresse 62	
Telephone 62	
Mail 62	
Client 63	
Adresse 63	
Telephone 63	
Mail 63	
Client 64	
Adresse 64	
Telephone 64	
Mail 64	
Client 65	
Adresse 65	
Telephone 65	
Mail 65	
Client 66	
Adresse 66	
Telephone 66	
Mail 66	
Client 67	
Adresse 67	
Telephone 67	
Mail 67	
Client 68	
Adresse 68	
Telephone 68	
Mail 68	
Client 69	
Adresse 69	
Telephone 69	
Mail 69	
Client 70	
Adresse 70	
Telephone 70	
Mail 70	
Client 71	
Adresse 71	
Telephone 71	
Mail 71	
Client 72	
Adresse 72	
Telephone 72	
Mail 72	
Client 73	
Adresse 73	
Telephone 73	
Mail 73	
Client 74	
Adresse 74	
Telephone 74	
Mail 74	
Client 75	
Adresse 75	
Telephone 75	
Mail 75	
Client 76	
Adresse 76	
Telephone 76	
Mail 76	
Client 77	
Adresse 77	
Telephone 77	
Mail 77	
Client 78	
Adresse 78	
Telephone 78	
Mail 78	
Client 79	
Adresse 79	
Telephone 79	
Mail 79	
Client 80	
Adresse 80	
Telephone 80	
Mail 80	
Client 81	
Adresse 81	
Telephone 81	
Mail 81	
Client 82	
Adresse 82	
Telephone 82	
Mail 82	
Client 83	
Adresse 83	
Telephone 83	
Mail 83	
Client 84	
Adresse 84	
Telephone 84	
Mail 84	
Client 85	
Adresse 85	
Telephone 85	
Mail 85	
Client 86	
Adresse 86	
Telephone 86	
Mail 86	
Client 87	
Adresse 87	
Telephone 87	
Mail 87	
Client 88	
Adresse 88	
Telephone 88	
Mail 88	
Client 89	
Adresse 89	
Telephone 89	
Mail 89	
Client 90	
Adresse 90	
Telephone 90	
Mail 90	
Client 91	
Adresse 91	
Telephone 91	
Mail 91	
Client 92	
Adresse 92	
Telephone 92	
Mail 92	
Client 93	
Adresse 93	
Telephone 93	
Mail 93	
Client 94	
Adresse 94	
Telephone 94	
Mail 94	
Client 95	
Adresse 95	
Telephone 95	
Mail 95	
Client 96	
Adresse 96	
Telephone 96	
Mail 96	
Client 97	
Adresse 97	
Telephone 97	
Mail 97	
Client 98	
Adresse 98	
Telephone 98	
Mail 98	
Client 99	
Adresse 99	
Telephone 99	
Mail 99	
Client 100	
Adresse 100	
Telephone 100	
Mail 100	
Client 101	
Adresse 101	
Telephone 101	
Mail 101	
Client 102	
Adresse 102	
Telephone 102	
Mail 102	
Client 103	
Adresse 103	
Telephone 103	
Mail 103	
Client 104	
Adresse 104	
Telephone 104	
Mail 104	
Client 105	
Adresse 105	
Telephone 105	
Mail 105	
Client 106	
Adresse 106	
Telephone 106	
Mail 106	
Client 107	
Adresse 107	
Telephone 107	
Mail 107	
Client 108	
Adresse 108	
Telephone 108	
Mail 108	
Client 109	
Adresse 109	
Telephone 109	
Mail 109	
Client 110	
Adresse 110	
Telephone 110	
Mail 110	
Client 111	
Adresse 111	
Telephone 111	
Mail 111	
Client 112	
Adresse 112	
Telephone 112	
Mail 112	
Client 113	
Adresse 113	
Telephone 113	
Mail 113	
Client 114	
Adresse 114	
Telephone 114	
Mail 114	
Client 115	
Adresse 115	
Telephone 115	
Mail 115	
Client 116	
Adresse 116	
Telephone 116	
Mail 116	
Client 117	
Adresse 117	
Telephone 117	
Mail 117	
Client 118	
Adresse 118	
Telephone 118	
Mail 118	
Client 119	
Adresse 119	
Telephone 119	
Mail 119	
Client 120	
Adresse 120	
Telephone 120	
Mail 120	
Client 121	
Adresse 121	
Telephone 121	
Mail 121	
Client 122	
Adresse 122	
Telephone 122	
Mail 122	
Client 123	
Adresse 123	
Telephone 123	
Mail 123	
Client 124	
Adresse 124	
Telephone 124	
Mail 124	
Client 125	
Adresse 125	
Telephone 125	
Mail 125	
Client 126	
Adresse 126	
Telephone 126	
Mail 126	
Client 127	
Adresse 127	
Telephone 127	
Mail 127	
Client 128	
Adresse 128	
Telephone 128	
Mail 128	
Client 129	
Adresse 129	
Telephone 129	
Mail 129	
Client 130	
Adresse 130	
Telephone 130	
Mail 130	
Client 131	
Adresse 131	
Telephone 131	
Mail 131	
Client 132	
Adresse 132	
Telephone 132	
Mail 132	
Client 133	
Adresse 133	
Telephone 133	
Mail 133	
Client 134	



Adjustable hanger SC3 Ref 87560    Galvanized threaded pin Ø6 PT6 Ref 87502    Threaded rocker Ø6 with rose BT6 Ref 87523    Galvanized nut Ø6 EH6 Ref 87547    Fischer nail FDN 6x35

Quantité :		
Perforation :		Auteur : MORLET C
Recherche :		Date : 23/04/2012
Matériau : acier		Site :
Désignation :		Objet :
<b>PLAFOMETAL</b>		
08800 MONHERME - FRANCE Tél : 03 24 59 95 37 - Fax : 03 24 59 94 02 Email : plafometal@giordano.com		
Client : GIORDANO		
FIRE RESISTANCE TEST QL		
PRODUCTS DRAWING		
Overall tolerance +/- 0.5mm Angle 90° 0' / -1° unless otherwise indicated		
drawing is the exclusive property of PLAFOMETAL and cannot be communicated or reproduced without written authorization		